



Supplied and Fitted By:
CENTRASECURITY.CO.UK
www.centrasecurity.co.uk

GE Magnetic Contacts

Product Information

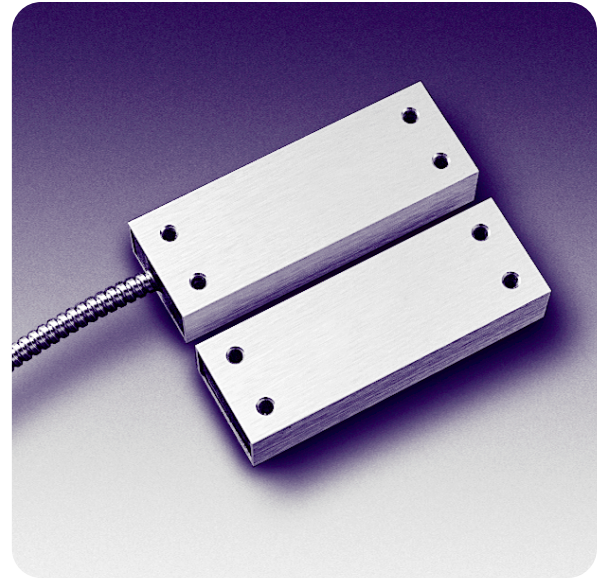
High Security Surface Mount

2700 Series

Overview

The 2700 Series High Security magnetic contacts with triple-biased reeds are highly resistant to defeat by external magnets. For added security, magnetic field tamper and pry tamper are standard features. Each 2700 contact and actuation magnet set is factory compensated for the effects of steel. All 2700 Series contacts are accepted by the Defense Intelligence Agency. They are listed in DIAM 50-3 for use in secure compartmented information facilities (SCIFs). 2700 Series High Security magnetic contacts are UL listed. Two models are listed for use on safes and vaults.

The 2700 Series can be used to protect doors in high security locations or where high value materials are stored. They have effectively been used at airports, biotechnology labs and other medical research settings, warehouses, manufacturing plants, jewelry stores, banks, data processing centers, military bases, ammunition depots, energy-generation facilities.



Standard Features

- Triple biased for increased security
- No field adjustment
- Pry tamper included
- Supervision and remote test options available
- UL listed for safes and vaults – 2707A, 2707AD

Model Numbers

2706AP, 2706AS, 2707A, 2707AD

High Security Surface Mount

2700 Series

Architectural and Engineering Specifications

The 2700 Series high security magnetic contact and actuating magnet housings measure 4.25" L x 1.50" W x 0.75" H (10.80 cm x 3.81 cm x 1.91 cm). The housing made of brushed anodized aluminum.

2707A/2707AD

The switches contains three independent Form C biased reed contacts, wired in SPDT configuration (model 2707A); or six independent Form C biased reed contacts, wired in DPDT configuration (model 2707AD). A supervised loop with a magnetic tamper feature is included on both models. A pry tamper connection is also available for the 24-hour loop.

2706AP/2706AS

The switches contain three independent Form C biased reed contacts, wired in SPDT configuration. A supervised loop with a series magnetic tamper and pry tamper are also included. Both models conform to Class IV Preadjusted Balanced Magnetic Contacts specifications. A remote test feature is provided in the protective loop (AP models) or in the supervised loop (AS models).

Specifications

Form C

Voltage

30V AC/DC max.

Current

0.25A max.

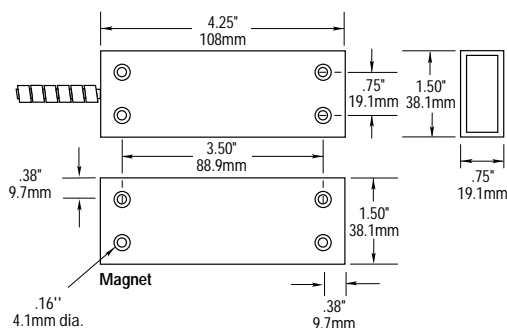
Power

3.0W max.

Listing

UL-634

Dimensions



Ordering Information

Model	Loop Type	Electrical Configuration	Color Choices	Gap Distance	Lead Type
2706AS Remote Test Supervised Loop	Open or Closed	SPDT	Anodized Aluminum	.2" to .6"	3' Stainless Steel Armored Cable
2706AP Remote Test Protective Loop	Open or Closed	SPDT	Anodized Aluminum	.2" to .6"	3' Stainless Steel Armored Cable
2707A	Open or Closed	SPDT	Anodized Aluminum	.2" to .6"	3' Stainless Steel Armored Cable
2707AD	Open or Closed	DPDT	Anodized Aluminum	.2" to .6"	3' Stainless Steel Armored Cable

Protected by U.S. Patent 4,210,889.

* Gap distances are nominal make distance ± 20%. Gap specifications are for switch to make.



GE Interlogix